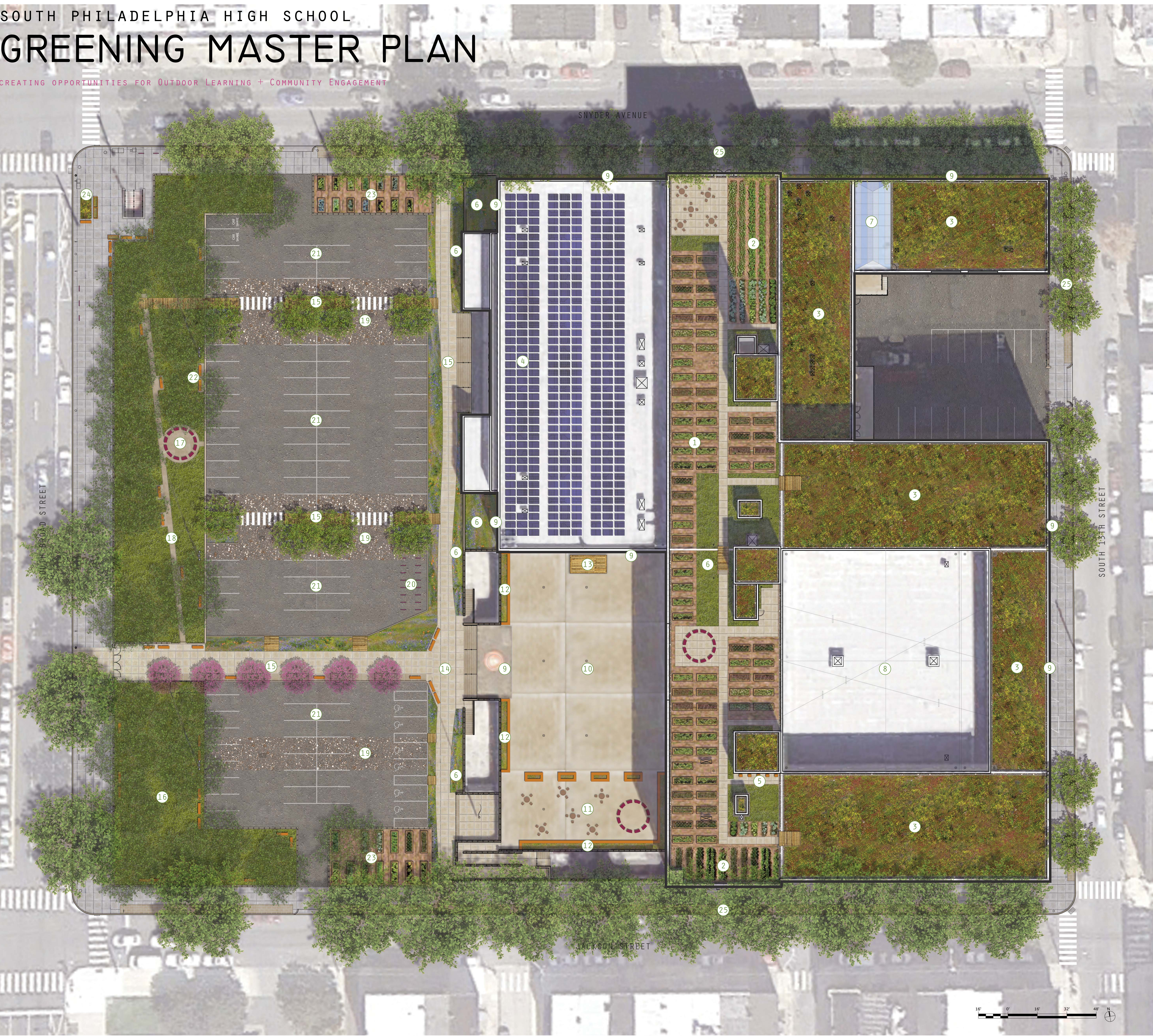


SOUTH PHILADELPHIA HIGH SCHOOL

# GREENING MASTER PLAN

CREATING OPPORTUNITIES FOR OUTDOOR LEARNING + COMMUNITY ENGAGEMENT



- 1 ROOFTOP FARM (RAISED BEDS)**  
RAISED BEDS BUILT BY CARPENTRY STUDENTS SUPPORT VEGETABLE CROPS + HERBS, FOR USE IN THE CULINARY ARTS PROGRAM.
- 2 ROOFTOP FARM (THIN ROW FARM)**  
STUDENTS EXPERIMENT WITH GROWING CROPS IN A THIN SOIL SYSTEM TO SEE WHICH CROPS PERFORM BEST.
- 3 EXTENSIVE GREEN ROOF**  
LIGHTWEIGHT SEDUM GREEN ROOFS WITH A THIN SOIL PROFILE OFFER BEAUTY, STORMWATER MANAGEMENT, POLLINATOR HABITAT, + EDUCATIONAL OPPORTUNITIES.
- 4 SOLAR PANELS**  
A STRIP OF THE GYMNASIUM ROOF, MOST VISIBLE FROM THE GROUND, HOUSES A PHOTOVOLTAIC ARRAY. SOLAR PHASE 2 INTRODUCES TWO MORE LINEAR ARRAYS. ENGINEERING STUDENTS DECIDE WHERE HARVESTED ENERGY IS ALLOCATED WITHIN THE SCHOOL BUILDING.
- 5 APIARY**  
ROOFTOP BEEHIVES PROVIDE CROP POLLINATION + AN OPPORTUNITY FOR STUDENTS TO LEARN IMPORTANT SKILLS. HONEY MAY BE SOLD OR USED IN THE SCHOOL.
- 6 PERENNIAL BEDS**  
ORNAMENTAL GRASSES + FLOWERING PERENNIALS DEMONSTRATE THE BEAUTY + DIVERSITY OF THE NATURAL ENVIRONMENT, WHILE ADDING COLOR, MOVEMENT, + POETIC INSPIRATION.
- 7 ROOFTOP GREENHOUSE**  
SEED STARTING + HYDROPONIC CROPS BLOSSOM HERE.
- 8 SUSPENDED ARTWORK**  
SUSPENDED ROOFTOP ARTWORK VISIBLE THROUGH CLASSROOM WINDOWS INSPIRE STUDENTS OF ALL AGES.
- 9 MURALS**  
EXISTING MURALS ON THE WEST + SOUTH WALLS OF THE GYMNASIUM + PLAZA ENTRY PROVIDE VIVID COLOR AND IMAGERY. ADDITIONAL MURALS ALONG SOUTH 13TH ST. + SNYDER AVE. BY MURAL ARTS LIVEN THE CAMPUS' "BACK DOOR" FOR NEIGHBORS.
- 10 ENTRY PLAZA (FLEXIBLE SPACE)**  
THIS MAIN GATHERING SPACE MAY BE EASILY TRANSFORMED INTO AN EVENT SPACE, OUTDOOR MOVIE THEATER, OUTDOOR LUNCH SPOT, OR BALL COURT.
- 11 CAFE SEATING**  
TABLES + CHAIRS ALLOW FACULTY, STAFF, + COMMUNITY MEMBERS TO ENJOY OUTDOOR DINING + SOCIALIZING.
- 12 SEAT WALL PLANTERS**  
SEAT WALLS WITH INTERNAL PLANTERS CREATE SOCIALIZING + SPECTATING SEATING AROUND THE PLAZA. THOSE AT THE CAFE SEATING AREA ARE PLANTED WITH HERBS + VEGGIES AVAILABLE TO THE COMMUNITY.
- 13 MOVEABLE STAGE**  
A STAGE, STORED INSIDE, MAY BE SET UP FOR OUTDOOR CONCERTS, AWARD CEREMONIES, + EVENTS.
- 14 PRIMETIME PLAZA**  
THIS GATHERING SPACE IS THE MAIN GATEWAY INTO THE SCHOOL. IT IS A PLACE TO SEE AND BE SEEN.
- 15 RAIN GARDEN WALK**  
RAIN GARDENS + PERENNIAL BEDS SOFTEN PATHWAYS WHILE ADDING COLOR + AN IMPORTANT ENVIRONMENTAL MESSAGE.
- 16 COMMUNITY DOG PARK**  
NEIGHBORHOOD DOG LOVERS FINALLY HAVE AN OFFICIAL DOG PARK, WITH BENCHES FOR PEOPLE AND A SECURE FENCE WITH DOUBLE GATE ENTRY FOR CANINE SAFETY.
- 17 OUTDOOR CLASSROOM**  
OUTDOOR "SEATING RINGS" CREATE OPPORTUNITIES FOR TEACHERS + STUDENTS TO LEARN COLLABORATIVE.
- 18 NATURE PATH**  
A PATH FOR THE COMMUNITY AND SCHOOL WEAVES THROUGH TALL TREE TRUNKS + SHADE GARDENS. SEATING PROVIDES A QUIET PLACE FOR READING + RELAXING.
- 19 PERVIOUS PAVING**  
STRATEGICALLY LOCATED POROUS PAVING WITH SUBGRADE PITCH DIRECTS RAINWATER TO RAIN GARDENS WHILE CREATING UNIQUE OUTDOOR LEARNING OPPORTUNITIES.
- 20 BIKE PARKING**  
BIKE RACKS ARE LOCATED FRONT + CENTER, CLOSE TO THE BUILDING ENTRY, TO REWARD BIKE COMMUTERS. THIS IS A PLACE TO BE PROUD.
- 21 PLAY/PARKING (FLEXIBLE SPACE)**  
PAVED AREAS LINED WITH RAIN GARDENS + TREES ARE PERFECT FOR PLAYING TAG, LEARNING TO RIDE A BIKE, OR SETTING UP A FAIR OR FARMERS' MARKET. CARS MAY BE PARKED IN DESIGNATED AREAS WHILE OTHER AREAS ARE ROPED OFF FOR ACTIVITIES + SPECIAL EVENTS.
- 22 SEATING NOOK**  
SEATING NOOKS PROVIDE GRANNIES AND SPECTATORS A COMFORTABLE SPACE TO WATCH OTHERS PLAY.
- 23 LEARNING GARDEN**  
EXISTING VEGETABLE GARDENS CONTINUE TO TEACH STUDENTS.
- 24 BUS SHELTER + SEATING**  
A BUS STOP WITH ITS OWN GREEN ROOF PROVIDES SHELTER + SEATING. ADDITIONAL SEATS + PLANTERS BY THE SUBWAY ENTRY CREATE A MORE WELCOMING TRANSIT HUB ENVIRONMENT.
- 25 STREET TREES**  
ADDITIONAL STREET TREES WITH LINEAR TRENCHES FILL IN THE GAPS BETWEEN EXISTING TREES TO CREATE A MORE PLEASANT PEDESTRIAN EXPERIENCE FOR THE WHOLE NEIGHBORHOOD.

